

Alcohol Tester



Product Specification

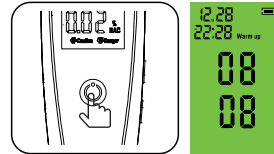
Display method: LCD screen
 Atmospheric pressure: 86Kpa - 106Kpa
 Alcohol sensor type: Semiconductor sensor
 Detection range: 0.0-1.9g/l (1 & 0.00% -0.19% BAC)
 Response time: 3~10 seconds
 Product Size: 102*32*15mm
 Power source: Lithium battery with 200 mAh capacity;
 5V DC power charging via micro USB port

Schematic



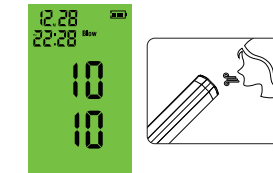
Instructions

Warm up
 1. Press the power button to turn on the alcohol monitor screen.
 2. "Warm up" will be displayed on the screen, the countdown for 10 seconds will start, and the detector will be warmed up.



Attention
 * When the detector is taken out for the first time, or it has not been used for a long time before use, there may be some gas or other impurities attached to the surface of the sensor. At this time, you need to switch the machine on and off several times, and clean the detector by repeating the warming up.

Detect
 1. When warm-up is completed, the device will "beep" and screen will display "Blow", the detection mode will count down for 10 seconds.
 2. Blow for 3-5 seconds near the detector blow port.



3. After a few seconds, the test result will be shown on the display.
 4. The test results are displayed in (mg/l) units.
 5. When the test result is less than 0.15mg/L, the background color of the screen is "green" and the buzzer does not sound;



When the test result is greater than or equal to 0.15mg/L and less than 0.25mg/L, the screen displays "Caution" and the background color is "orange", and the buzzer has a prompt sound;



When the test result is greater than or equal to 0.25mg/L, the screen displays "Danger" and the screen background color is "red", and the buzzer has a prompt sound;



6. When the device is turned on, when it is detected that the battery is low, the device cannot be tested normally, and the display will automatically shut down after about 3 seconds of display.
 7. When charging, the battery icon on the display screen will be animated from left to right, and the charging light will turn on red.

Automatic shutdown

After the detection result is displayed for 10 seconds, the detector will shut down automatically.

Attention

* If there is alcohol gas inside the detector, the warm-up time will be longer and the warm-up will be repeated several times. If you want to repeat testing for in short time, it is recommended to shake it by hand to disperse the alcohol gas.

* If the detector enters the test mode without blowing air, the test results on the screen will show 0.00.

Time setting

After power on, double-click the power button to enter the time setting, the first is the month, and press the plus and minus keys to adjust. Short press the power button to enter the date, and press the plus and minus keys to adjust. Short press the power button again to enter the hour, and press the plus and minus keys to adjust. After setting, short press the power button again to exit and save.

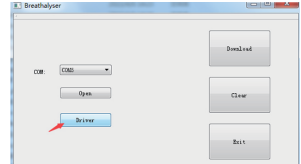
Storage function

The detector will automatically save the alcohol concentration data and time and date after each test. 150 pieces can be stored. If the memory is full, re-testing will overwrite the previous data. The specific viewing method is as follows:

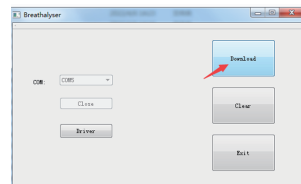
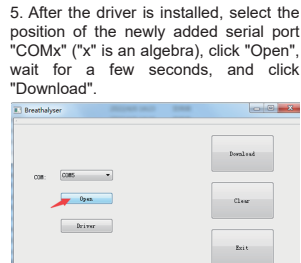
1. The manufacturer provides a software package, please install and download it (click the link: <http://alcohol-tester.co/al.zip>), after decompressing and downloading, perform the following operations (please install the driver for the first time)
 2. After unzipping, you will get the "Breathalyser" folder.

3. Open the "Breathalyser" folder, find "Breathalyser.exe" and double-click to install it.

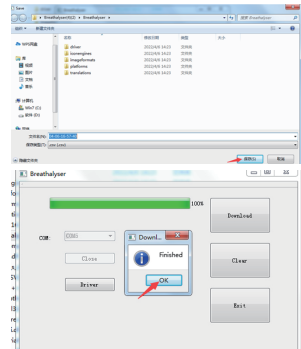
4. Select "Driver" → "Install" on the installation interface, after a few seconds, it will show that the installation is successful, click "OK" (if the computer is used for the first time, the driver must be installed first).



5. After the driver is installed, select the position of the newly added serial port "COMx" ("x" is an algebra), click "Open", wait for a few seconds, and click "Download".



6. Select the download path, and save (the file can be renamed).



7. After the download is complete, the file will be saved in the selected path and open to view.

DATE	TIME	BY (mg/l)
4月4日	17:28	0.205
4月4日	17:31	0.435
4月6日	14:28	0.14
4月6日	14:29	0.375

Common faults and solutions

Phenomenon	Reason	Solution
can't start	The battery is critically low	Please power the product
No response to blowing	Circuit failure	Contact after sales
No result is displayed when blowing	There is residual gas in the product	Contact after sales
No tests, but results are shown	Not blowing within the specified time	Reheat the product
The results of several tests are different	Test immediately after drinking	Reheat the product
	Blowing time is different	Reheat the product
	Deep breathing for 5-8 seconds is recommended	Reheat the product

Matters needing attention

* It takes about 20 minutes for alcohol to be absorbed by the blood from the digestive system, so it is recommended to take the test 20 minutes after drinking alcohol. When tested immediately after drinking, the results is only the alcohol level in the mouth, not the alcohol level in the blood.
 * In order to get more accurate data, two consecutive tests should be separated by more than 3 minutes.
 * The device can not work properly in a high concentration gas environment.
 * Do not wash the detector directly with chemicals.
 * Do not allow liquid to flow into the detector.
 * Do not put in irritating gas such as paints and pesticides.
 * If the battery is low, there will be a certain deviation between the detected value and the actual value.
 * The test results of this product are for reference only.

Specifications

Item	Parameters
Product name	Alcohol Tester
Types of alcohol sensors	Semiconductor
Measuring range	0.0-1.9g/l 0.00% - 0.19%BAC
Indication error	±0.01%BAC
Range of working temperature	-5°C~45°C
Storage temperature range	-20°C~50°C
Power supply	Lithium battery 180mAh
Working current	150mA
Display	LCD screen
Charging input	5V1A
Product size	106*30*15mm

Detection unit

* Commonly used units in various countries:
 mg/100ml—China, %BAC—US,
 g/l—Europe, mg/BrAC—Japan
 * 0.0% BAC means 0.0g (omg) of alcohol per 100mL of blood.

	(BAC) blood alcohol concentration				(BrAC) breathing Alcohol concentration	
	mg/100ml	%	‰	g/l	mg/l	PPM
1	10	0.01	0.1	0.1	0.05	25
2	20	0.02	0.2	0.2	0.10	50
3	30	0.03	0.3	0.3	0.15	75
4	40	0.03	0.4	0.4	0.20	100
5	50	0.05	0.5	0.5	0.25	125
6	60	0.06	0.6	0.6	0.30	150
7	70	0.07	0.7	0.7	0.35	175
8	80	0.08	0.8	0.8	0.40	200
9	90	0.09	0.9	0.9	0.45	225
10	100	0.10	1.0	1.0	0.50	250
11	110	0.11	1.1	1.1	0.55	275
12	120	0.12	1.2	1.2	0.60	300
13	130	0.13	1.3	1.3	0.65	325
14	140	0.14	1.4	1.4	0.70	350
15	150	0.15	1.5	1.5	0.75	375
16	160	0.16	1.6	1.6	0.80	400
17	170	0.17	1.7	1.7	0.85	425
18	180	0.18	1.8	1.8	0.90	450
19	190	0.19	1.9	1.9	0.95	475
20	200	0.20	2.0	2.0	1.00	500